

A large African elephant with prominent tusks stands in a savanna landscape. The elephant is positioned on the right side of the frame, facing forward. The background features a line of acacia trees under a clear sky. The foreground is filled with tall, golden-brown grass.

# Kenya

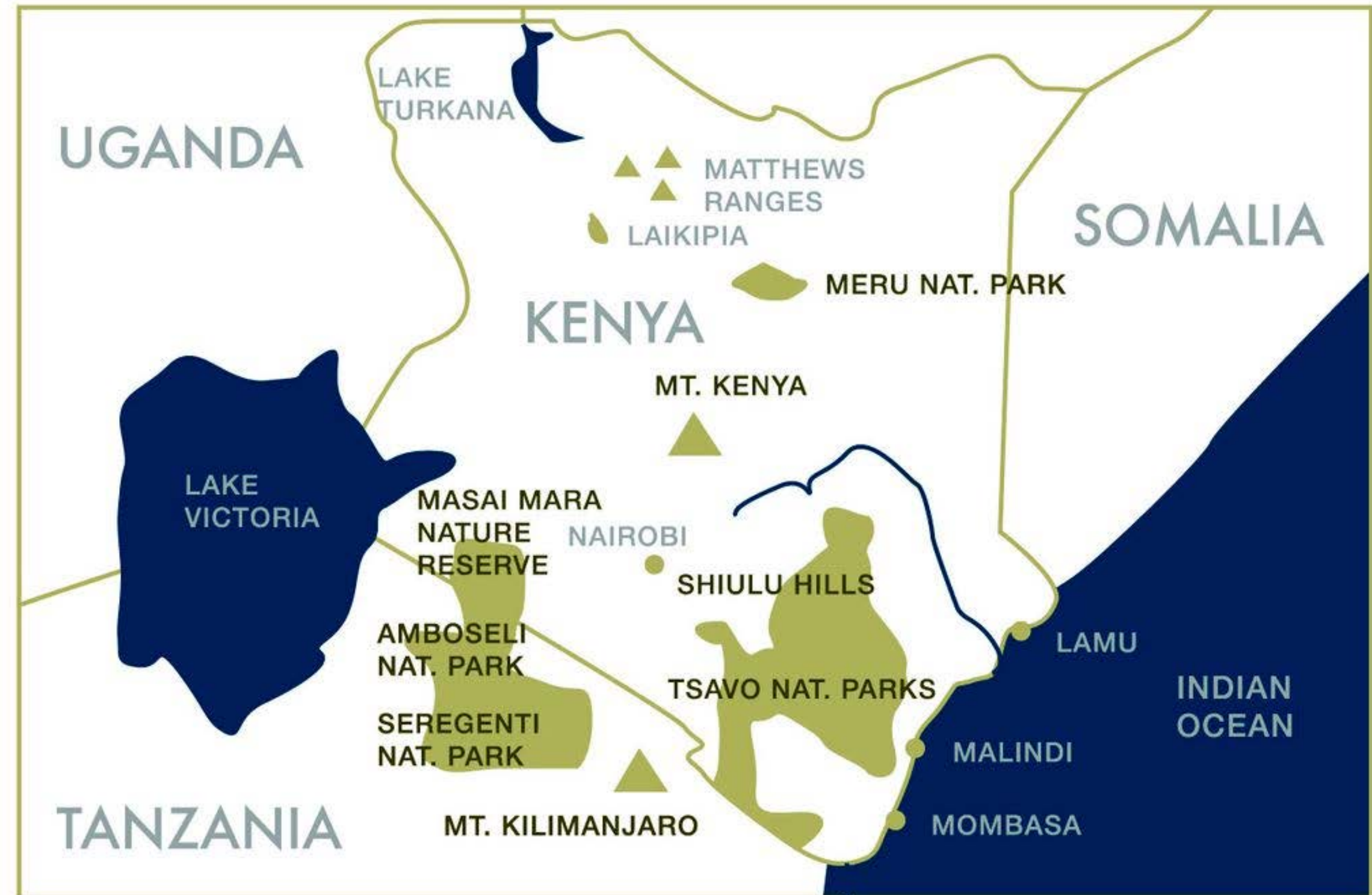
**NAIROBI, MERU, SAMBURU, LAIKIPIA & AMBOSELI**

12 DAYS

# NAIROBI, MERU, SAMBURU, LAIKIPIA & AMBOSELI

## Overview

No safari is complete without time spent under canvas in the style of the old explorers. Nigel Archer private mobile-tented camps allow us to visit some of the most beautiful and remote wilderness areas in East Africa. They give us the flexibility to follow the movement of the wildlife and position our camps for the best game viewing possible. Designed from decades of experience, the camps provide the ultimate in luxurious exclusivity whilst allowing for an intimate wildlife experience. A full crew of exceptional safari staff are there to look after your every need. Whether it is preparing a beautifully laid dinner under the stars or a piping hot shower upon return from your afternoon's adventures.



# NAIROBI, MERU, SAMBURU, LAIKIPIA & AMBOSELI: ITINERARY AT-A-GLANCE

## DAY 1

### Nairobi

Arrive Nairobi Airport.  
Overnight Hemingways  
Hotel

## DAY 2

### Meru

Meru National Park,  
Overnight Private  
Luxury Camp, Meru

## DAY 3

### Meru

Meru National Park,  
Overnight Private  
Luxury Camp, Meru

## DAY 4

### Meru

Meru National Park,  
Overnight Private  
Luxury Camp, Meru

## DAY 5

### Samburu

Sera Community  
Conservancy,  
Overnight Saruni Rhino

## DAY 6

### Samburu

Sera Community  
Conservancy,  
Overnight Saruni Rhino

## DAY 7

### Laikipia

Karisia Walking  
Safaris, Overnight  
Tumaren Camp

## DAY 8

### Laikipia

Karisia Walking  
Safaris, Overnight  
Tumaren Camp

## DAY 9

### Amboseli

Amboseli National  
Park, Overnight Private  
Luxury Camp,  
Amboseli

## DAY 10

### Amboseli

Amboseli National  
Park, Overnight Private  
Luxury Camp,  
Amboseli

# NAIROBI, MERU, SAMBURU, LAIKIPIA & AMBOSELI: ITINERARY AT-A-GLANCE

## DAY 11

### **Amboseli**

Amboseli National  
Park, Overnight Private  
Luxury Camp,  
Amboseli

## DAY 12

### **Depart**

Tamarind Tree, Depart  
Nairobi Airport



# DAY 1: NAIROBI

Upon landing at JKIA you will be met by our driver who will transport you to the iconic Hemingways Hotel, Nairobi for your first night accommodation.

This 45-suite boutique hotel elevates the standard of luxury for the travellers in the region. Beautiful in its symmetry and flooded with natural light, this plantation-style property is airy and spacious. Each of their 80M2 suites have a private balcony overlooking the iconic silhouette of the Ngong hills, a magical view which can also be enjoyed over sundowners at the bar.

## Overnight Hemingways Hotel



# DAY 2-4: MERU

After an early breakfast you will be met and transferred to Wilson airport for your chartered flight to Meru. Upon arrival you will be met and transferred to the camp.

Private Luxury Camp, Meru.

Meru National Park is an area of some 1,813 sq. km, which lies north east of Mt. Kenya. Numerous permanent streams flow down from the mountain and together with the abundant rainfall support an area of forest, savannah and swamp. Meru National Park supports all the large predators and their prey. Regular sightings include Beisa Oryx, Gerenuk, Elephant, Grevy's Zebra, Reticulated Giraffe, Lesser Kudu, Grant's Gazelle, Leopard, Lion, Cheetah, Rhino and the rare, elusive Greater Kudu. Meru is known for its bird life, including riverine and forest species as well as the arid dry country species.

This park is famous for being Joy and George Adamson's former base where they raised lion (this is where the famous Elsa from the film "Born Free" was released) and leopard cubs until they were old enough to return to the wild. Meru is vast with arid, open plains dotted with Doum Palms and Baobab trees and lush vegetation along 13 rivers, like green ribbons, bisecting the Park.

**Overnight Meru Private Luxury Camp (Breakfast, Lunch, Dinner)**



# DAY 5-6: SAMBURU

After breakfast, you will be transferred back to the airstrip for your flight to Sera. You will be met and transferred to Saruni Rhino.

Saruni Rhino was opened in February of 2017 and is located in Sera Community Conservancy. Saruni Rhino offers the first rhino tracking experience in East Africa: an amazing walking safari that provides a uniquely thrilling adventure, but also allows guests to actively contribute to the protection of this iconic species.

Saruni Rhinos intimate camp is nestled amidst swaying doum palms dotted along a dry river bed within sweeping views of a nearby waterhole and a dramatic landscape. The waterhole is popular for a diverse range of wildlife: elephant, impala, birdlife, hyena, oryx, grevy's zebra to name but a few. Staying at Saruni Rhino is an experience in itself, which echos the origins of safari – exploring remote areas of a yet largely undiscovered terrain, the main draw to the area is the reason for the camp's name sake – the endangered black Rhino.

## **Overnight Saruni Rhino (Breakfast, Lunch, Dinner)**





# DAY 5-6: SAMBURU

## **About The Sera Community Conservancy**

After years of hard work, substantial investment, passion and determined commitment by Sera community members and Northern Rangelands Trust (NRT), in May 2015 Sera Community Conservancy became the home to the 'Sera Rhino Sanctuary'. Sera Community Conservancy is a vast, untouched wilderness of more than 350,000 hectares, larger than Luxembourg and Hong Kong combined. It is the first community conservancy in Africa to own and operate a sanctuary dedicated to the conservation of the critically endangered black rhino. The sanctuary currently provides state-of-the-art protection for 11 black rhinos relocated from Lewa Conservancy, Nakuru National Park and other areas. This move sees the rhino back in its natural habitat in northern Kenya after 30 years.

Saruni is delighted to be able to offer our guests a scintillating, 'thrill-of-a-lifetime' experience: a walking safari tracking black rhino on foot, accompanied by an expert Saruni guide and a highly-trained Sera Community Conservancy ranger, equipped with a transmitter correlating to the GPS whereabouts of the 11 rhinos throughout the 54,000 hectares- large sanctuary. The vast rhino sanctuary has been fenced in what is one of the most advanced conservation projects in Kenya. Operational only throughout certain hours of the day for maximum protection, the use of the transmitter allows us to game drive our guests a tracking distance away from the nearest rhino, leaving the vehicle and continuing on foot (very lightly to not give away our presence) to metres from the grazing rhino. The tension is palpable as you come across the rhino in such close proximity for the first time; heart beating, pulse racing, curiosity and excitement mounting – it doesn't get more thrilling than this!



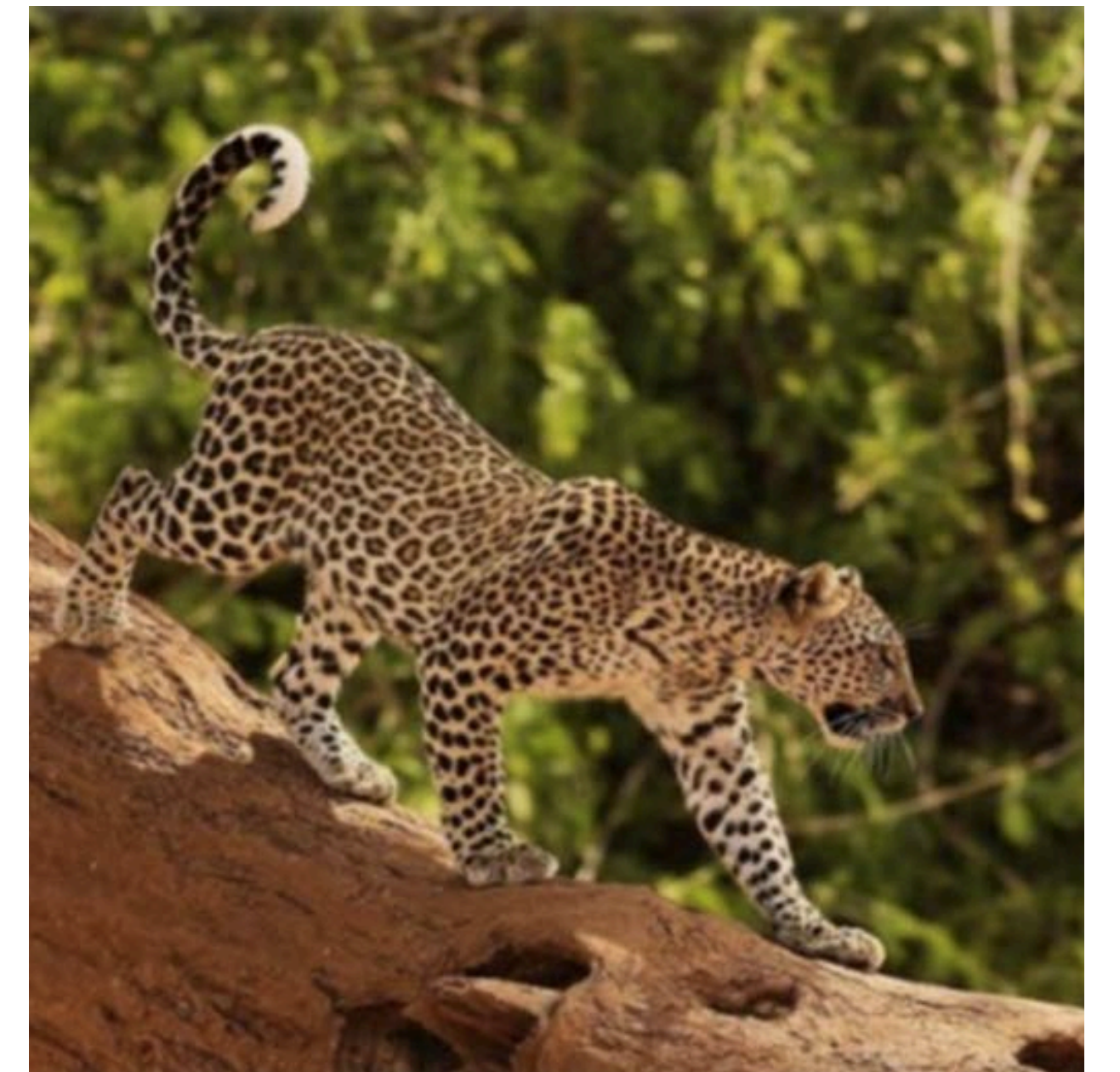


# DAY 7-8: LAIKIPIA

After breakfast, you will be transferred back to the airstrip for your chartered flight to Laikipia. Karisia walking safaris is located in eastern Laikipia, an area north of Mt Kenya known for its wilderness and wildlife. The area boasts the highest diversity of large mammals in Kenya and is also home to several endangered species such as the Grevy's Zebra, Wild-dog, and Jackson's hartebeest. The walking safaris with Karisia traverse beautiful county with geologic structures of immense age that tell stories of a turbulent and rich history. Archaeological artefacts like flints, shrad, graves and pottery litter much of the ground near the camps and in all this evidence are fascinating stories of an equally turbulent cultural history.

Situated at the eastern periphery of a wide plain, Tumaren looks westward towards a series of granitic kopjes that define eastern Laikipia. In the foreground, you might expect to see Giraffe or other plains game that seek the safety of the open grassland. This luxury tented camp was originally the home of Kerry and James (owners of Karisia Walking Safaris) and it has 4 beautiful sleeping tents which have solar lighting and running water. Guests staying here do walks, camel rides, picnics, rock climbing and game viewing and come back to the camp each day.

**Overnight Tumaren Camp (Breakfast, Lunch, Dinner)**



# DAY 9-11: AMBOSELI

After breakfast you will be transferred to the airstrip for your departing chartered flight to Amboseli. You will be met and transferred to your private luxury camp. Game drive en-route.

Crowned by Mount Kilimanjaro, Africa's highest peak, the Amboseli National Parks is one of Kenya's most popular parks. The name "Amboseli" comes from a Maasai word meaning "salty dust", and it is one of the best places in Africa to view large herds of elephants up close. Nature lovers can explore five different habitats here ranging from the dried-up bed of Lake Amboseli, wetlands with sulphur springs, the savannah and woodlands. You can also visit the local Maasai community who live around the park and experience their authentic culture.

## **Overnight Amboseli Private Luxury Camp (Breakfast, Lunch, Dinner)**



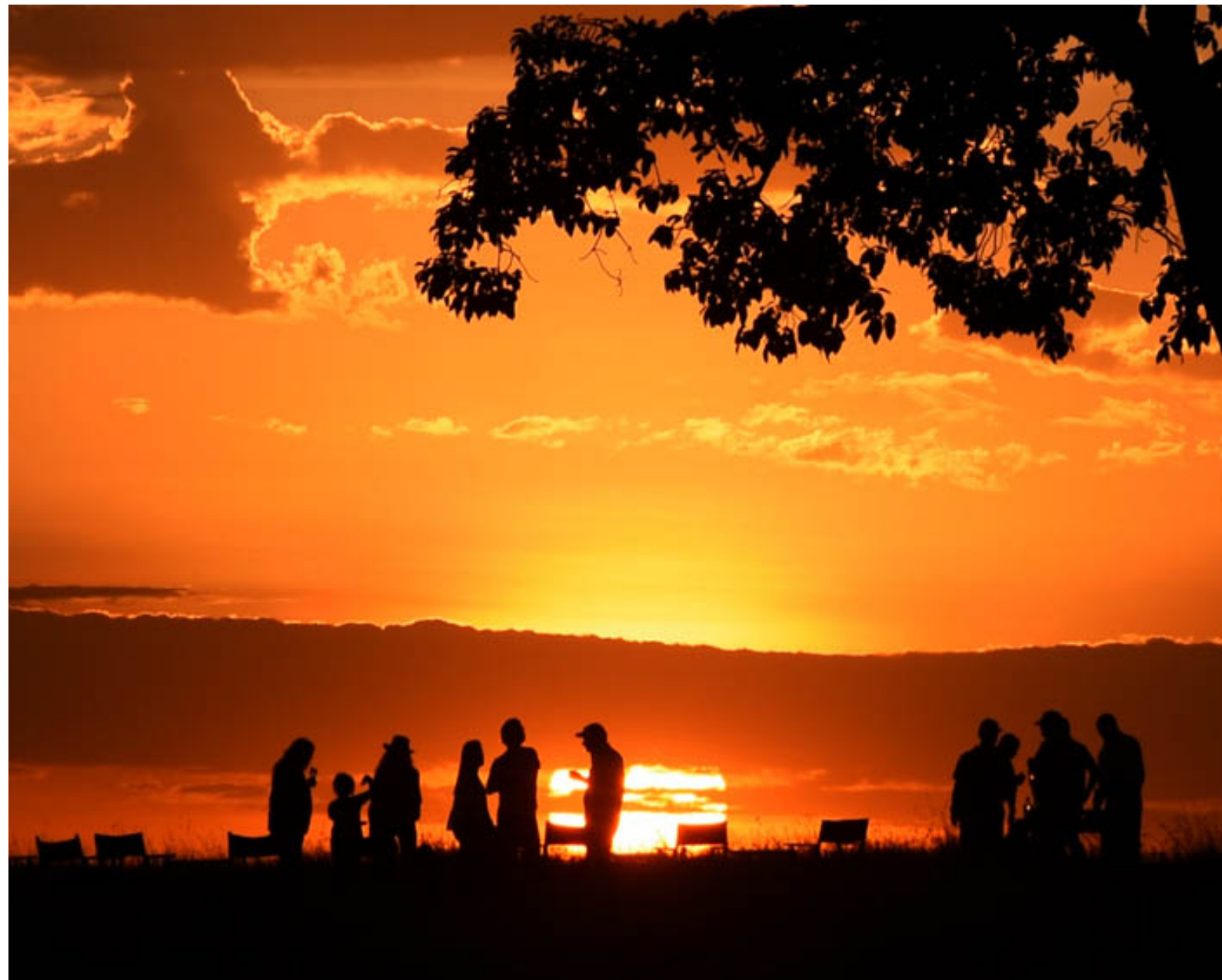
# DAY 12: DEPARTURE

After an early breakfast you will be whisked away for the final leg of your safari, this time in your own private helicopter.

Flying low over the majestic Lake Magadi and Shompole, taking in the stunning colours the flamingos and the water have to offer. After a picnic brunch you will continue your journey to Nairobi where you will be collected from your private heli pad in the leafy suburb of Karen. Our driver will meet you and transfer you to Tamarind Tree hotel where we have booked a room for you to freshen up before heading for an evening of true Kenyan hospitality at Nigel Archers own home before departing for your international flight.







# ACCOMMODATIONS

**HEMINGWAYS HOTEL, NAIROBI** This 45-suite boutique hotel elevates the standard of luxury for the travellers in the region. Beautiful in its symmetry and flooded with natural light, this plantation-style property is airy and spacious. Each of their 80M2 suites have a private balcony overlooking the iconic silhouette of the Ngong hills, a magical view which can also be enjoyed over sundowners at the bar.



**SARUNI RHINO** Saruni Rhino offers the first rhino tracking experience in East Africa: an amazing walking safari that provides a uniquely thrilling adventure, but also allows guests to actively contribute to the protection of this iconic species. Saruni Rhinos intimate camp is nestled amidst swaying doum palms dotted along a dry river bed within sweeping views of a nearby waterhole and a dramatic landscape. Staying at Saruni Rhino is an experience in itself, which echos the origins of safari – exploring remote areas of a yet largely undiscovered terrain, the main draw to the area is the reason for the camp’s name sake – the endangered black Rhino.





# ACCOMMODATIONS

**TUMAREN CAMP** Situated at the eastern periphery of a wide plain, Tumaren looks westward towards a series of granitic kopjes that define eastern Laikipia. In the foreground, you might expect to see Giraffe or other plains game that seek the safety of the open grassland. This luxury tented camp was originally the home of Kerry and James (owners of Karisia Walking Safaris) and it has 4 beautiful sleeping tents which have solar lighting and running water. Guests staying here do walks, camel rides, picnics, rock climbing and game viewing and come back to the camp each day.



**TAMARIND TREE, NAIROBI** Ideally located just 5 kms southwest of the City within the spacious Carnivore grounds and its iconic Carnivore Restaurant, Tamarind Tree Hotel has easy access to Nairobi, its national park, and the country's diverse attractions.



A wide-angle photograph of a savanna landscape at sunset or sunrise. The sky is a gradient of warm colors, from a pale yellow at the top to a deep orange near the horizon. A large, dark silhouette of an acacia tree stands prominently in the center foreground. The horizon line is dark, with a few smaller, distant tree silhouettes visible on the left and right. The overall mood is serene and natural.

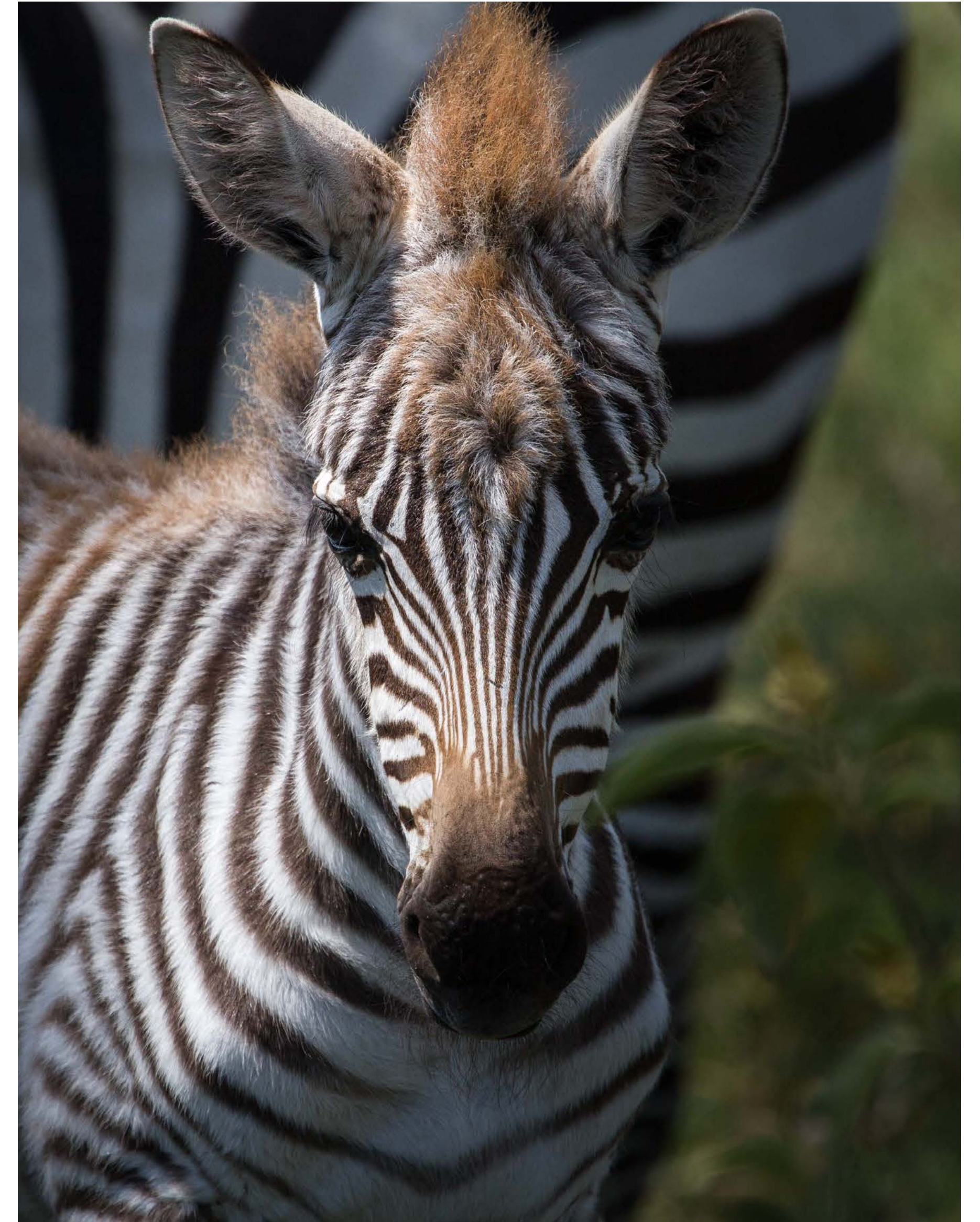
DESTINATION:  
**KENYA, AFRICA**

# DESTINATION: KENYA, AFRICA

The Republic of Kenya is a country in East Africa, made up of 42 different ethnic tribes. Lying along the Indian Ocean to its southeast and at the equator, Kenya is bordered by Somalia to the northeast, Ethiopia to the north, Sudan to the northwest, Uganda to the west and Tanzania to the south. The country is named after Mount Kenya, a significant landmark and second among Africa's highest mountain peaks.

Kenya originates from the Kikuyu, Embu, and Kamba names of Mount Kenya, whose pre-historic volcanic eruptions (now extinct) resulted in an association with divinity and creation among the indigenous Kikuyu-related ethnic groups who are the original native inhabitants of the vast agricultural land surrounding Mount Kenya. From the coast on the Indian Ocean the Low plains rise to central highlands. The highlands are bisected by the Great Rift Valley; a fertile plateau in the east. The Kenyan Highlands comprise one of the most successful agricultural production regions in Africa. Fossils found in East Africa suggest that primates roamed the area more than 20 millions years ago. In 1984, Richard Leakey a palaeoanthropologist discovered the skeleton of a Turkana boy belonging to Homo erectus from 1.6 million years ago.

In the centuries preceding colonization, the Swahili coast of Kenya was part of the east African region, which traded with the Arab world and India especially for ivory and slaves. Close to 90% of the population on the Kenya coast was enslaved. Swahili, a Bantu language with Arabic, Persian, and other Middle Eastern and South Asian loan words developed as the trade language between the different peoples. The colonial history of Kenya dates from the establishment of a German protectorate over the Sultan of Zanzibar's coastal possessions in 1885, followed by the arrival of the Imperial British East Africa company in 1888. What followed was the building of the Kenya-Uganda railway, where there was a significant inflow of Indian peoples who provided the bulk of the skilled manpower required for construction. While building the railroad through Tsavo, a number of Indian railway workers and African labourers were attacked by two lions known as the Tsavo maneaters. Kenya has considerable land area of wildlife habitat, including the Masai Mara, where blue wildebeest and other animals participate in a large scale annual migration to find forage in the dry season. This migration occurs between June and September.



# DESTINATION: KENYA, AFRICA

## Entry Requirements

Kenya Visas are issued on arrival. US Citizens / other Nationals pay \$50 per person and these Visas can be arranged beforehand as well. A passport valid for six months after date of entry is required. Visitors must hold return/onward tickets and all documents required for their next destination.

## Vaccinations

Kenya requires proof of a valid Yellow Fever immunization certificate. (Immigration officials might force a visitor to get immunized, which is at an extra cost). Hepatitis A and B, Tetanus, and Typhoid immunizations are recommended for all travelers. Malaria prophylaxis is recommended and you should consult your local doctor or physician to advise which malaria medication is best suited for you. Information on vaccinations and other health precautions, such as safe food and water precautions and insect bite protection, may be obtained from the CDC's Internet site at <http://www.cdc.gov/travel>

## Weather

Nairobi, Kenya

MONTH	JAN	FEB	MAR	APR	MAY	JUN	JUL	AUG	SEP	OCT	NOV	DEC
AVE. HIGH	77	79	77	75	72	70	70	70	75	75	73	73
AVE. LOW	54	55	57	57	55	54	52	52	55	55	55	55

## Communication

Kenya – country code +254. Most areas will have mobile access and Internet available. Some areas while trekking or on safari may not have mobile access.

## Electricity

Kenya - Electrical current is 230 volts, 50Hz (Type D; electrical plug has three circular pins) (Type G; electrical plug has three flat prongs)

## Gear List

\*\*A comprehensive gear list will be provided for essential clothing items to bring whilst on safari or activities

## Travel Advisories

Make two photocopies of valuables such as your passport, tickets, visas and travelers' cheques. Keep one copy with you in a separate place to the original and leave another copy with someone at home. Be sure to inform your credit card company as well as your bank you will travel internationally into Africa. This will eliminate any credit card holds for fraudulent activity.

## Currency

Carrying cash, an ATM or traveler's check card and also a credit card that can be used for cash advances in case of emergency is advisable. The best places to exchange money are normally bureau de change, which are fast, have longer hours and often give slightly better rates than banks. Local currency is Kenyan Shillings (KSH), however most places accept USD. Better hotels, lodges, and camps will accept credit cards, however it is advised to withdraw cash when visiting remote areas and villages.

## Government

Kenya – is a democratic republic with a President as head of state and head of government.

## Religion

Kenya – the predominant religion is Christianity adhered by 4/5 of the population. Other faiths include Hinduism, Islam, and traditional African religions. Muslims make up a portion of religion practiced near the coastal areas.

## Ethnic Groups

African peoples indigenous to Kenya, who now form 98% of the population, fall into three major cultural and linguistic groups: Bantu, Nilotic, and Cushitic. Although most of the land area is occupied by Cushitic and Nilotic peoples, over 70% of the population is Bantu. The Luo, a Nilotic people, live in an area adjacent to Lake Victoria. Other Nilotes – Turkana, Maasai, Pokot, Nandi, Kipsigis, and Tugen – occupy a broad area in the west from Lake Rudolf to the Tanzanian border. Cushites such as the Galla and Somali live in the eastern and northeastern parts of the country. The Bantu reside mainly in the coastal areas

and the southwestern uplands; the most significant bantu peoples are the Kikuyu, Kamba, and Luhya. The Kikuyu, who constitute the largest single ethnic group in Kenya, live for the most part north of Nairobi and have played a major role in the nation's political and social development.

## Languages

Kenya – Swahili and English are the two official languages. 62 languages are spoken in Kenya.

## Economy

Kenya's economy is market-based, with a few state owned infrastructures enterprises and maintains a liberalized external trade system. The country is generally perceived as Eastern and central Africa's hub for Financial, Communication and Transportation services. There is a large pool of English speaking professional workers and high computer literacy rate among youth. An increasingly significant portion of Kenya's foreign inflows is from remittances by non-resident Kenyans who work in the US, Middle East, Europe and Asia. Compared to its neighbors, Kenya has a well developed social and physical infrastructure. It is considered the main alternative location to South Africa for major corporations seeking entry into the African continent. The agriculture sector continues to dominate Kenya's economy. The principal cash crops are tea, horticultural produce, and coffee; horticultural produce and tea are the main growth sectors and the two most valuable of all of Kenya's exports. Tea, coffee, sisal, pyrethrum, corn, and wheat are grown in the fertile highlands, one of the most successful agricultural production regions in Africa. Livestock predominates in the semi-arid savanna to the north and east. Coconuts, pineapples, cashew nuts, cotton, sugarcane, sisal, and corn are grown in the lower-lying areas

## Climate

Kenya has a tropical climate. It is hot and humid at the coast, temperate inland and very dry in the north and northeast parts of the country. There is a lot of rain between March and May (the long rains) and moderate rain in October and November (the short rains). The temperature remains high throughout these months. The country receives a great deal of sunshine all the year round. It is usually cool at night and early in the morning.

# NAIROBI, MERU, SAMBURU, LAIKIPIA & AMBOSELI: 12-DAY TOUR

## Nairobi, Meru, Samburu, Laikipia & Amboseli 12-Day Tour

### Includes:

- Bed & breakfast Hemingways hotel Nairobi
- Refresher room at Tamarind Hotel
- All internal flights
- Private guide & vehicle (Nigel Archer)
- All internal road transfers
- Half day vehicle on the final day
- All Park & Conservation fee
- One Cultural visit in Amboseli
- Full board accommodation in your Private Mobile Camp, Saruni Rhino & Karisia
- Drinks – soft drinks, house wines, water, juices & local beers.
- One Rhino Tracking session per day
- Bush meals, sundowners & Picnic excursions
- Daily walking safaris with camels at Karisia
- Day & Night game drives at Karisia & Saruni Rhino
- Laundry
- AMREF Emergency medical evacuation cover within Kenya.

### Excludes:

- International Flights
- Tourist Entry Visa for Kenya
- Travel and Personal Health Insurance
- Gratuities
- Items of personal nature
- Entrance into Nairobi excursions
- Meals and drinks on the final day
- Drinks at Hemingways & Tamarind Tree
- Spa treatments at Saruni Rhino
- Premium drinks in all locations
- Nigel Archer Safaris is not liable for any costs related to injury, illness, bodily harm or loss that may occur whilst within the mobile camp.